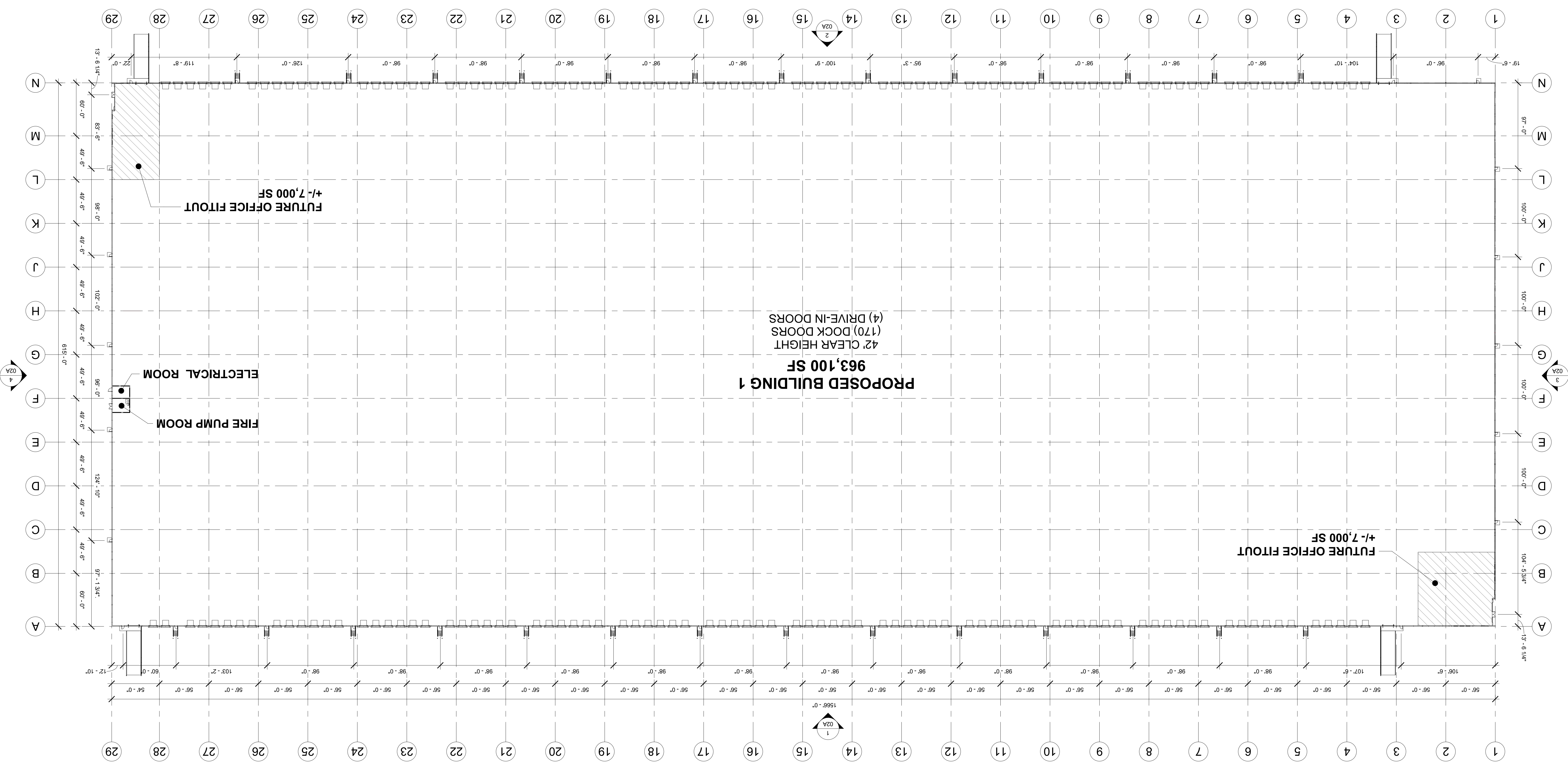


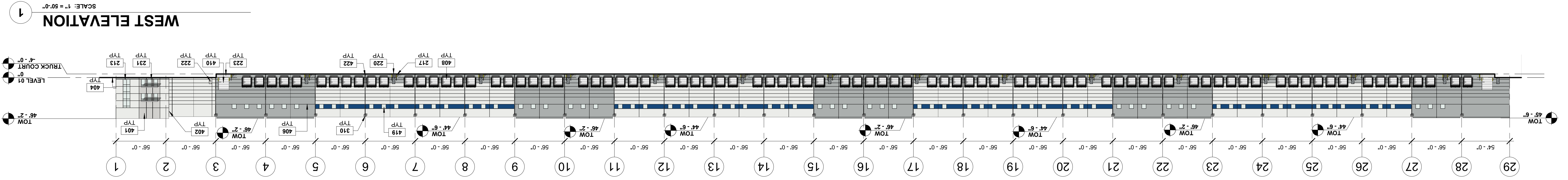
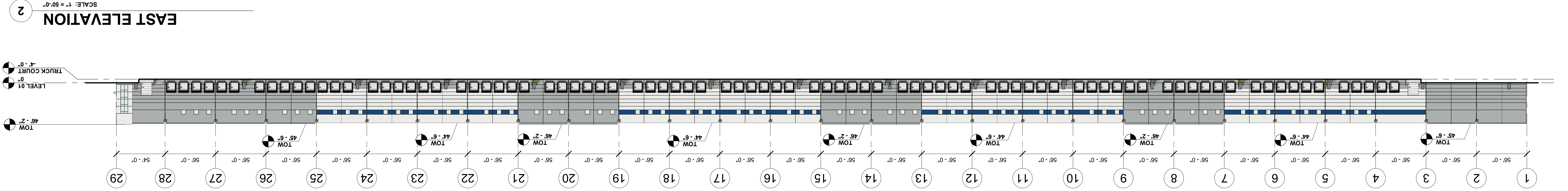
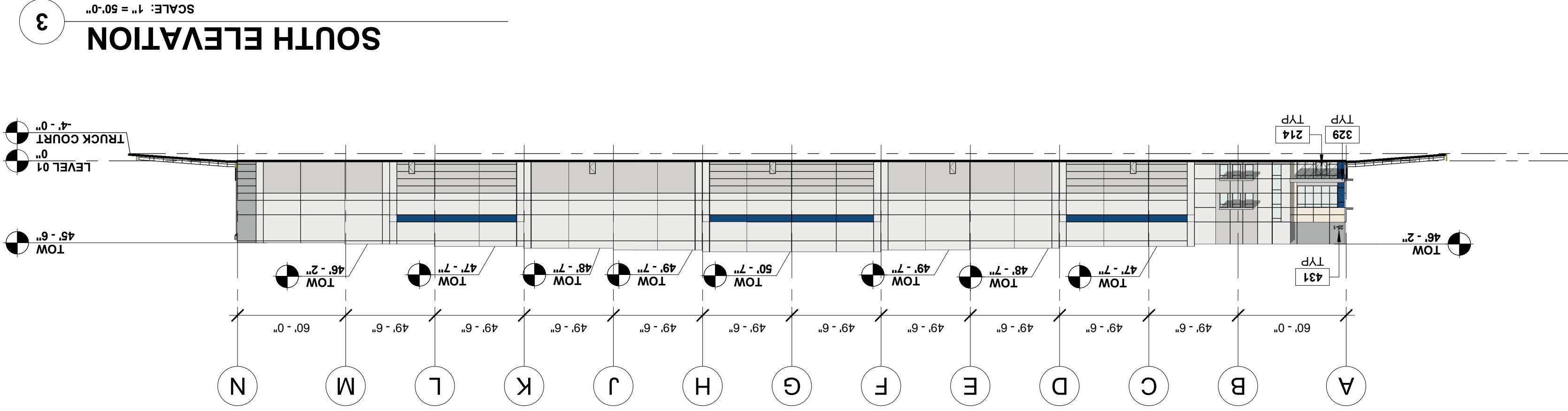
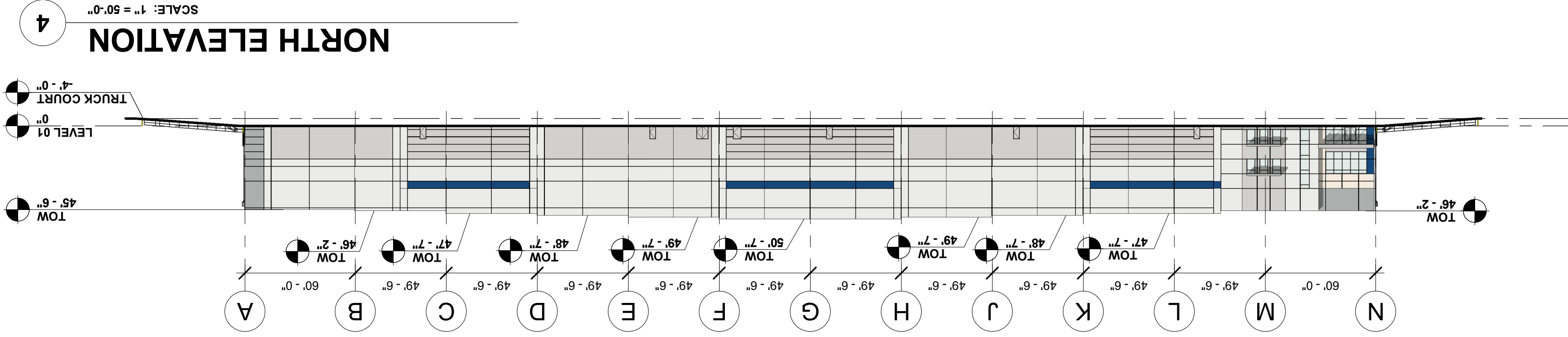
CONCEPTUAL FLOOR PLAN - BUILDING 1

OVERALL FLOOR PLAN
 SCALE: 1" = 50'-0"



CONCEPTUAL ELEVATIONS - BUILDING 1

This conceptual design is based upon a preliminary review of ambient requirements and on unverified and possibly inaccurate information. The project owner is responsible for providing accurate information and for verifying the design.



PAIN'T SCHEME COLORS:

	P-1 - BASE COLOR: SW 6252 ICE CUBE (RAL 000 90 00 WINTER WHITE)
	P-2 - ACCENT COLOR: SW 7667 ZIRCON (RAL 000 80 00 FOGGY GREY)
	P-3 - ACCENT COLOR: SW 7659 GRIS (RAL 000 70 00 LIGHT GREY)
	P-4 - ACCENT COLOR: SW 6611 HONORABLE BLUE (RAL 270 30 35 KOLBRN BLUE)
	P-5 - ACCENT PANEL: DEKTON AGED TIMBER

GLASS:

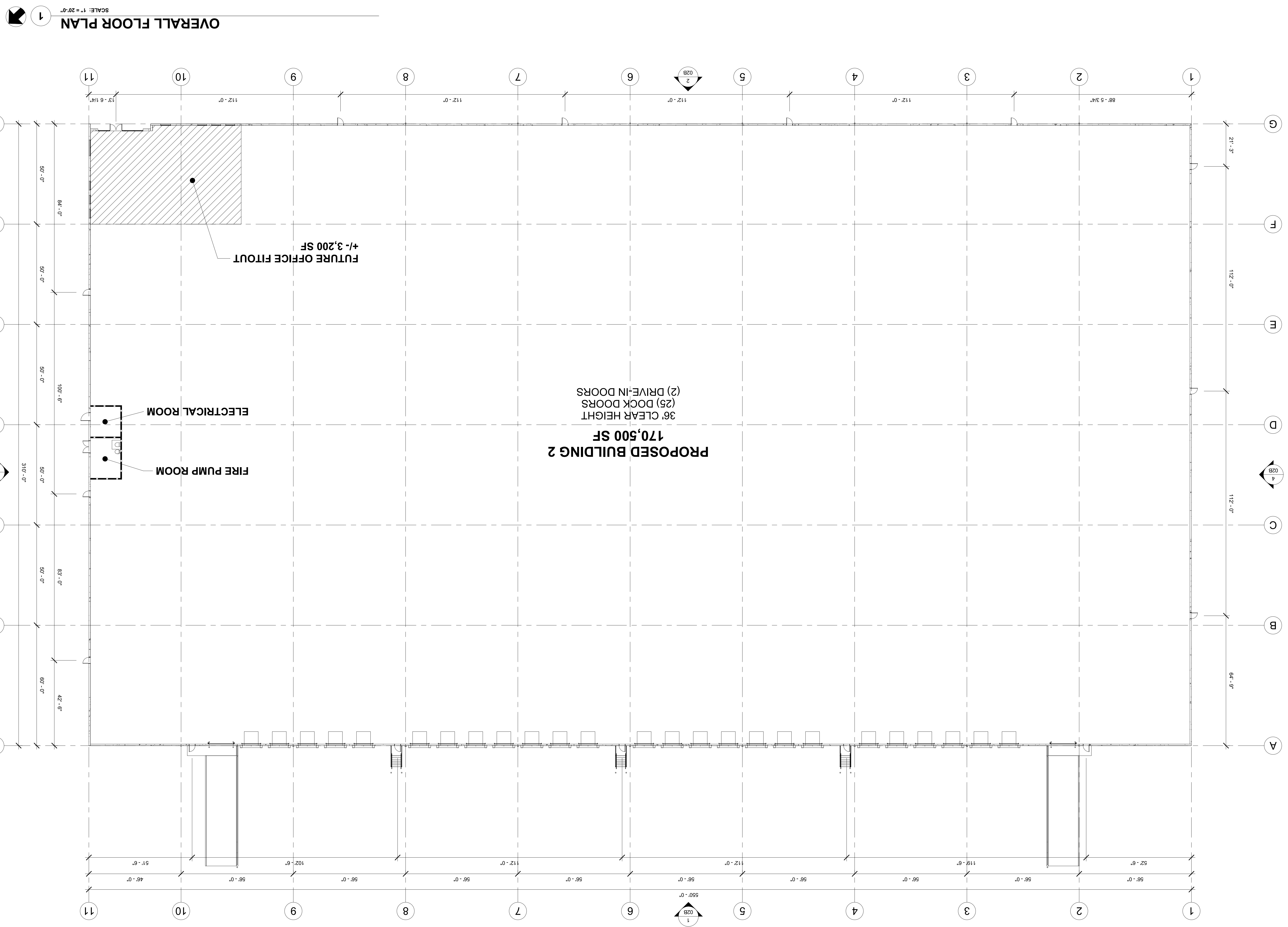
	GL-01 - INSULATED GLAZING UNIT
	GL-02 - TEMPERED SAFETY GLASS
	GL-03 - SPANDREL GLASS

- KEYNOTE LEGEND**
- 431 ALUMINUM STOREFRONT SYSTEM
 - 422 DOWNSPOUT GUARD
 - 419 CLEARESTORY WINDOW
 - 410 DRIVE-IN DOOR
 - 408 SECTIONAL OVERHEAD DOOR
 - 404 PANEL REVEAL
 - 402 CONCRETE PANEL JOINT
 - 401 CONCRETE PANEL, PAINTED MEDIUM TEXTURE
 - 320 METAL CANOPY
 - 310 EXTERIOR ROOF DRAIN, SCUPPER AND DOWNSPOUT
 - 222 CONCRETE EXTERIOR DRAIN-FRAMED
 - 221 HOLLOW METAL DOOR AND FRAME, PAINTED
 - 220 STEEL STAIR WITH GUARDRAIL AND HANDRAIL. ALL MATERIALS TO BE GALVANIZED.
 - 217 PAINTED YELLOW
 - 214 ROLLUP & DRUM CONCRETE FILLED, GALVANIZED STEEL WITH TOP GUARD CAP.
 - 213 ALUMINUM STOREFRONT SYSTEM

SEE GLAZING TYPES SHEET FOR GLAZING TYPES & SPECIFICATIONS

CONCEPTUAL FLOOR PLAN - BUILDING 2

The conceptual design is based upon a preliminary review of ambient requirements and on limited site and property records for the site. The design is preliminary and is intended to provide a general overview of the project. It is not intended to be used for construction purposes.

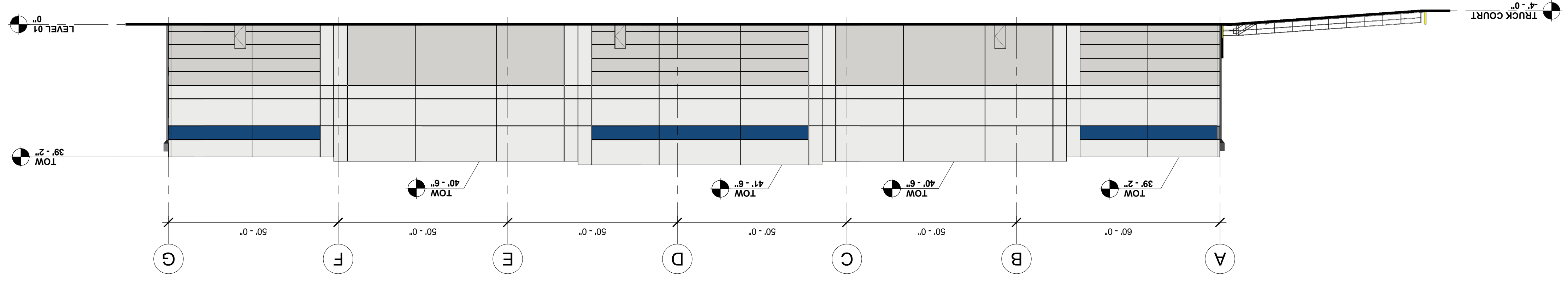


1 OVERALL FLOOR PLAN
SCALE: 1" = 20'-0"

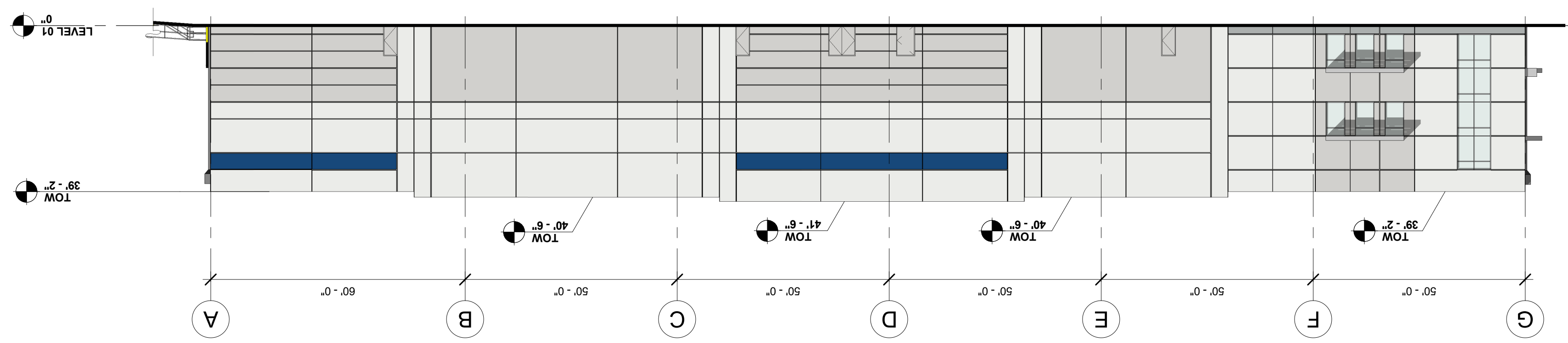
CONCEPTUAL ELEVATIONS - BUILDING 2

This conceptual design is based upon a preliminary review of entitlement requirements and on limited site photos. It is intended to provide a general impression of the proposed building and is not intended to be used as a contract document.

4 SOUTH ELEVATION
SCALE: 1" = 20'-0"



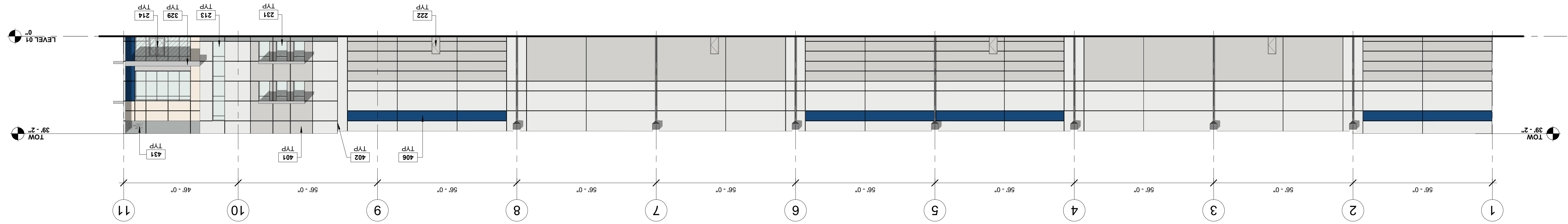
3 NORTH ELEVATION
SCALE: 1" = 20'-0"



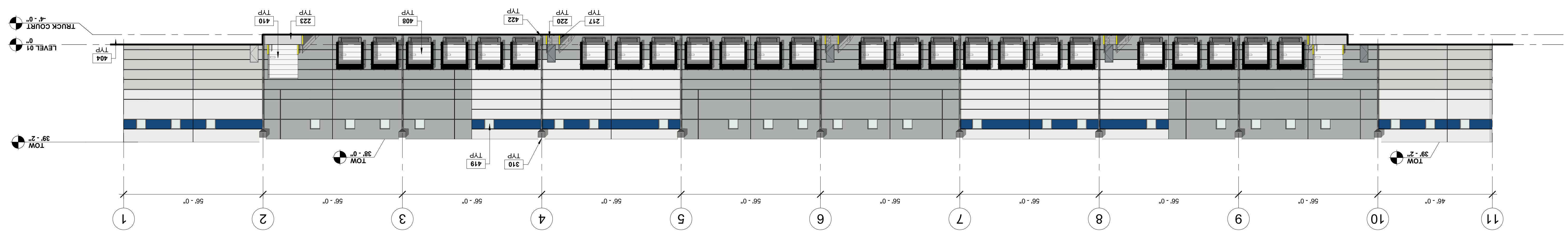
- KEYNOTE LEGEND**
- 213 ALUMINUM STOREFRONT SYSTEM
 - 214 BOLLARD & DIM. CONCRETE FILLED, GALVANIZED STEEL, WITH TOP-GUARD CAP, PAINTED YELLOW
 - 217 STEEL STAIR WITH GUARDRAIL AND HANDRAIL, ALL MATERIALS TO BE GALVANIZED
 - 220 HOLLOW METAL DOOR AND FRAME, PAINTED
 - 222 CONCRETE EXTERIOR DRIVE-IN RAIR
 - 223 ALL GLASS USED ON THE ENVELOPE OF THE BUILDING TO BE INSULATED, IN MANUFACTURER'S STANDARD COLOR RANGE
 - 310 EXTERIOR ROOF DRAIN, SCUPPER AND DOWNSPOUT
 - 329 METAL CANOPY
 - 401 CONCRETE PANEL, PAINTED MEDIUM TEXTURE
 - 402 FINISH GRADE VARIES
 - 406 PANEL REVEAL
 - 408 SECTIONAL OVERHEAD DOOR
 - 410 DRIVE-IN DOOR
 - 419 CLEARESTORY WINDOW
 - 422 DOWNSPOUT GUARD
 - 431 EXTERIOR BUILDING SIGNAGE & BUILDING ADDRESS TO BE PER CITY STANDARDS.

- GLAZING LEGEND**
- GL-01 INSULATED GLAZING UNIT
 - GL-02 TEMPERED SAFETY GLASS
 - GL-03 SPANDREL GLASS
- PAINT SCHEME COLORS:**
- P-1 - BASE COLOR: SW 6252 ICE CUBE (RAL 900 90 00 WINTER WHITE)
 - P-2 - ACCENT COLOR: SW 7667 ZIRCON (RAL 900 80 00 FOGGY GREY)
 - P-3 - ACCENT COLOR: SW 7669 GNS (RAL 900 70 00 LIGHT GREY)
 - P-4 - ACCENT COLOR: SW 6811 HONORABLE BLUE (RAL 270 30 35 KOLBRN BLUE)
 - P-5 - ACCENT PANEL: DEKTON AGED TIMBER
- SEE GLAZING TYPES SHEET FOR GLAZING TYPES & SPECIFICATIONS

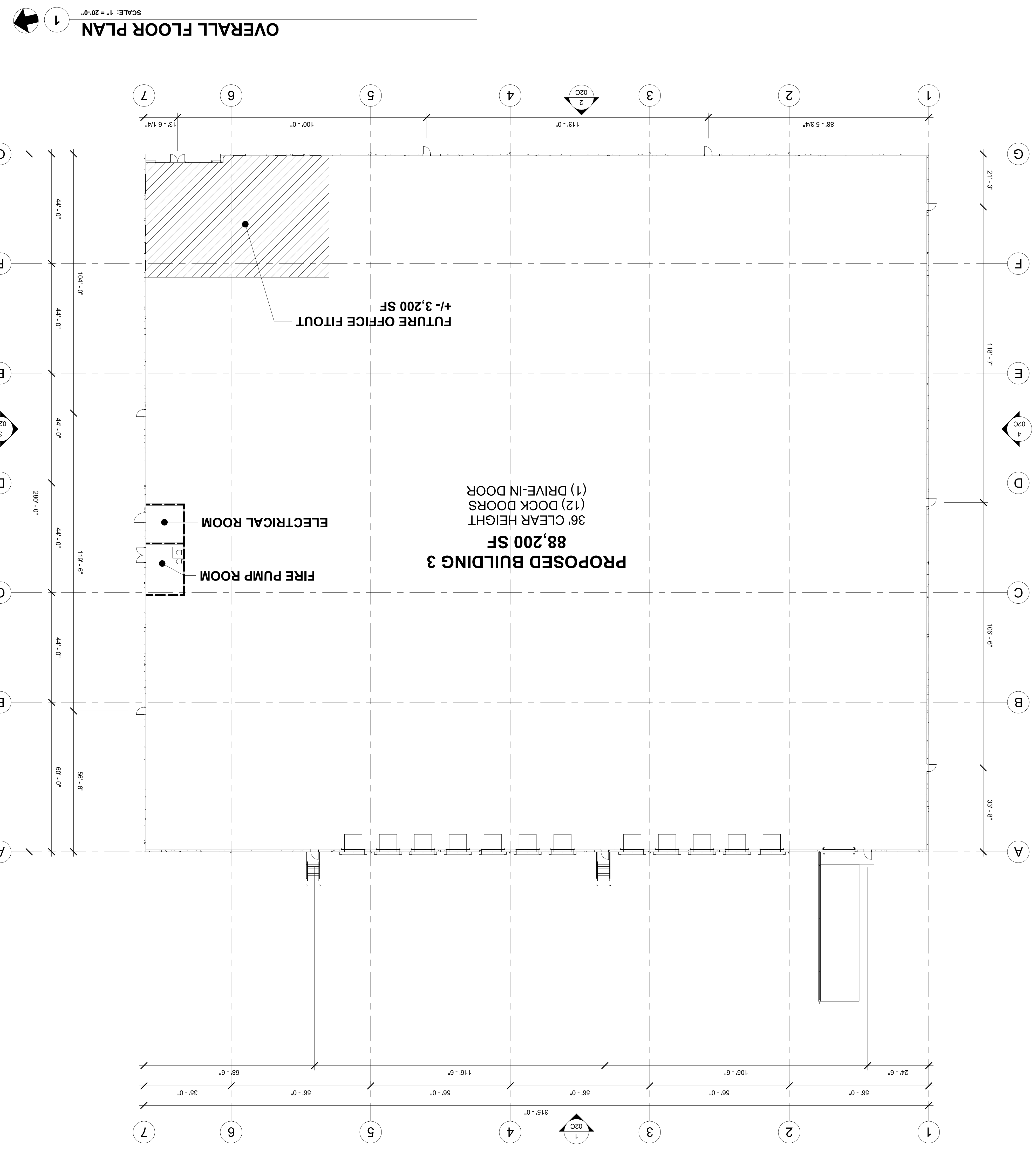
2 EAST ELEVATION
SCALE: 1" = 20'-0"



1 WEST ELEVATION
SCALE: 1" = 20'-0"



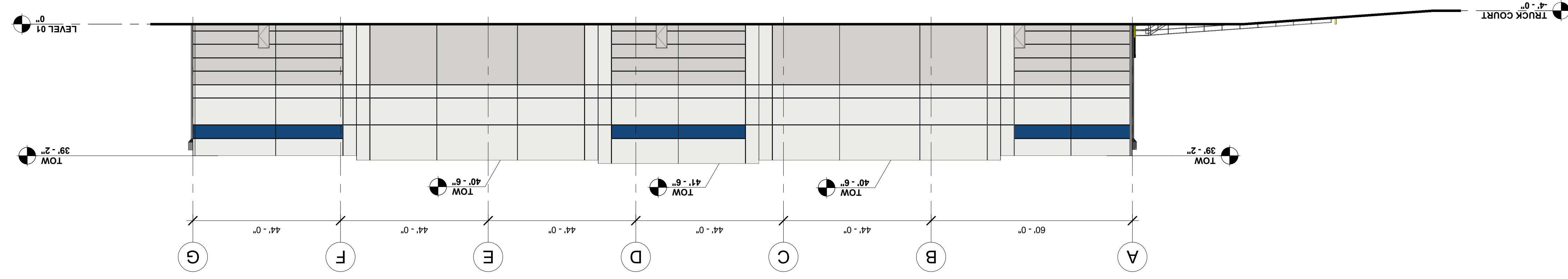
CONCEPTUAL FLOOR PLAN - BUILDING 3



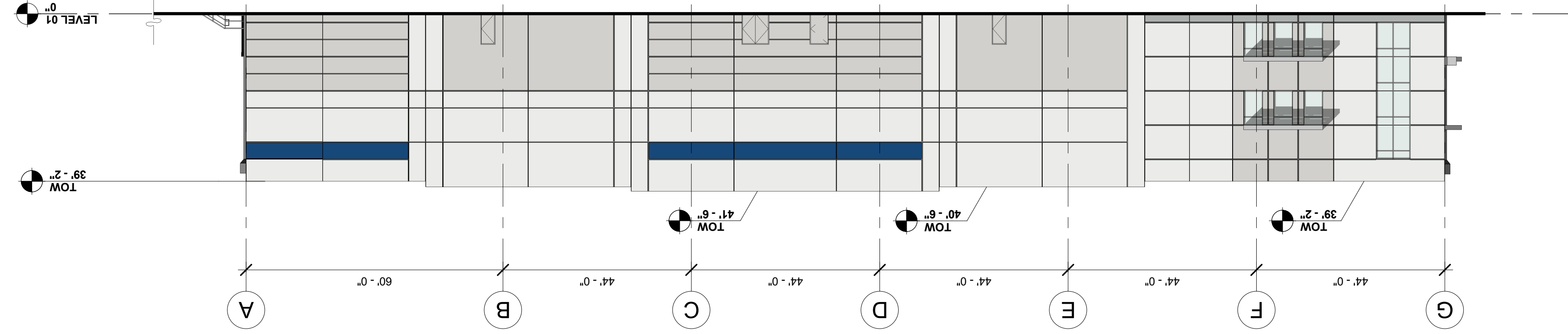
CONCEPTUAL ELEVATIONS - BUILDING 3

The conceptual design is based upon a preliminary review of entitlement requirements and intended to be used as a guide only. It is not intended to be used for construction and is subject to change without notice.

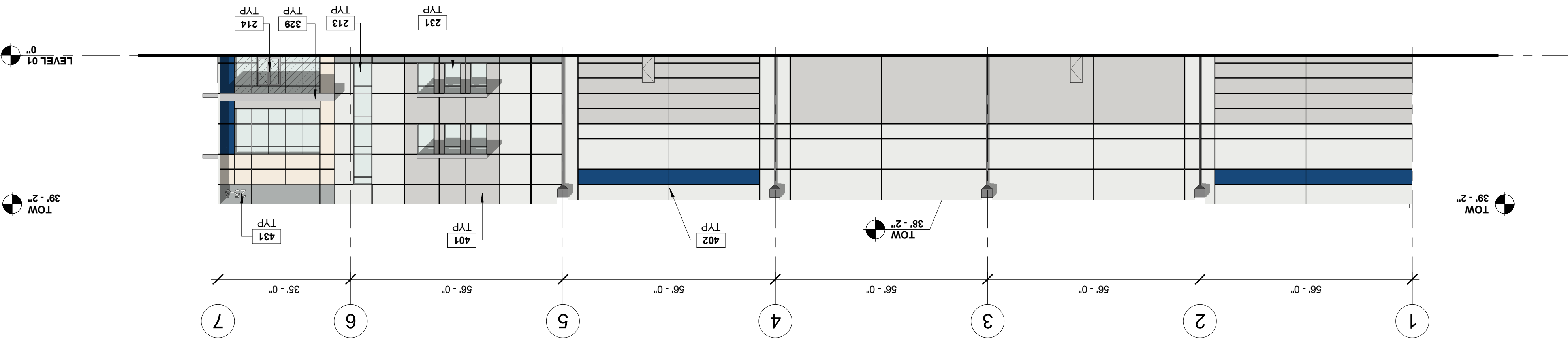
4 SOUTH ELEVATION
SCALE: 1" = 20'-0"



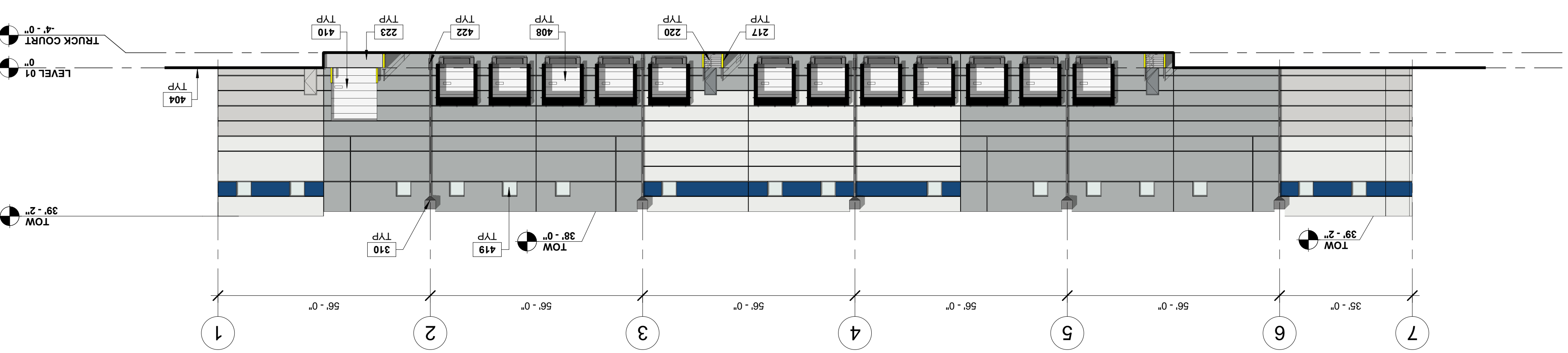
3 NORTH ELEVATION
SCALE: 1" = 20'-0"



2 EAST ELEVATION
SCALE: 1" = 20'-0"



1 WEST ELEVATION
SCALE: 1" = 20'-0"



PAINT SCHEME COLORS:

P-5 - ACCENT PANEL, DEKTON AGED TIMBER	[Color swatch]
P-4 - ACCENT COLOR: SW 6811 HONORABLE BLUE (RAL 270 35 KOLBRI BLUE)	[Color swatch]
P-3 - ACCENT COLOR: SW 7559 GRIS (RAL 000 70 00 LIGHT GREY)	[Color swatch]
P-2 - ACCENT COLOR: SW 7627 ZIRCON (RAL 000 80 00 FOGGY GREY)	[Color swatch]
P-1 - BASE COLOR: SW 6232 ICE CUBE (RAL 000 90 00 WINTER WHITE)	[Color swatch]

GLASS:

GL-01 INSULATED GLAZING UNIT	[Pattern swatch]
GL-02 TEMPERED SAFETY GLASS	[Pattern swatch]
GL-03 SPANDREL GLASS	[Pattern swatch]

SEE GLAZING TYPES SHEET FOR GLAZING TYPES & SPECIFICATIONS

KEYNOTE LEGEND

213	ALUMINUM STOREFRONT SYSTEM
214	ALUMINUM STOREFRONT DOOR
217	BUILDING 3 DIA. CONCRETE FILLED, GALVANIZED STEEL, WITH TOP-GUARD CAP, PAINTED YELLOW
220	STEEL STAIR WITH GUARDRAIL AND HANDRAIL. ALL MATERIALS TO BE GALVANIZED.
223	CONCRETE EXTERIOR DRIVE-IN RAMP
231	ALL GLASS USED ON THE ENVELOPE OF THE BUILDING TO BE INSULATED, IN MANUFACTURERS STANDARD COLOR RANGE
310	EXTERIOR ROOF DRAIN, SCUPPER AND DOWNSPOUT
329	METAL CANOPY
401	CONCRETE PANEL, PAINTED MEDIUM TEXTURE
402	CONCRETE PANEL JOINT
404	FINISH GRADE VARIES
408	SECTIONAL OVERHEAD DOOR
410	DRIVE-IN DOOR
419	CLEARSTOREY WINDOW
422	DOWNSPOUT GUARD
431	EXTERIOR BUILDING SIGNAGE & BUILDING ADDRESS TO BE PER CITY STANDARDS

KEYNOTE LEGEND